



The small, efficient
modular boiler plant

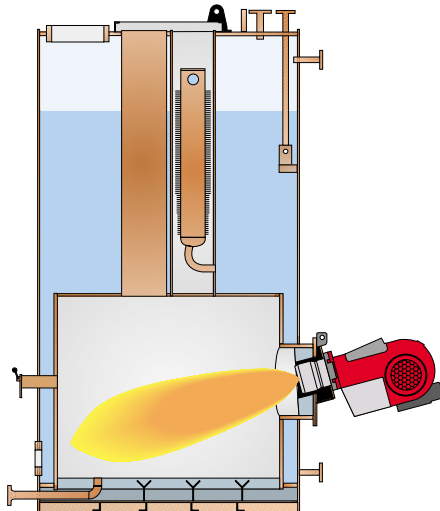
MISSION™ OS



MISSION™ OS is a high performance, small size oil-fired auxiliary boiler with a capacity range of up to 6.5 t/h.

MISSION™ OS is a vertical cylindrical boiler based on the modular boiler concept introduced by Aalborg Industries, giving numerous advantages to shipyards and owners.

MISSION™ OS - a modular boiler



The pin-tube elements are an integrated part of the boiler design. The pin-tube elements support the furnace and boiler top plate. The design has been significantly optimised to achieve lower weight and improved strength. The result is a longer lifetime of the pin-tube by a factor of 8.



MISSION™ OS's control system provides fully automatic operation of the boiler and the pressure-jet burner. A new reliable and user friendly control system, based on a microprocessor, facilitates operation and control of the MISSION™ OS. The system includes burner load and sequence control, water level and safety device, burner motor and fuel heater starter and starter for fuel oil pumps.

- High performance boiler
- Capacity range up to 6.5 t/h
- Easy handling standard design
- Optimised pin-tube design
- Low stress concentrations
- Maximum utilisation of furnace
- High performance combustion integrated control panel

Aalborg Industries has been the world's leading supplier of marine boilers for more than 80 years. Continuously striving to keep our position, we gradually introduce new, innovative boiler designs. MISSION™ OS is a high performance oil-fired auxiliary boiler in the low capacity range up to 6.5 t/h. It is a standard preassembled boiler unit ready for immediate installation. MISSION™ OS is designed in accordance with the numerous advantages of the modular boiler concept introduced by Aalborg Industries. MISSION™ OS is designed as a vertical cylindrical boiler. The boiler shell surrounds the cylindrical furnace and the convective section consisting of pin-tube elements.

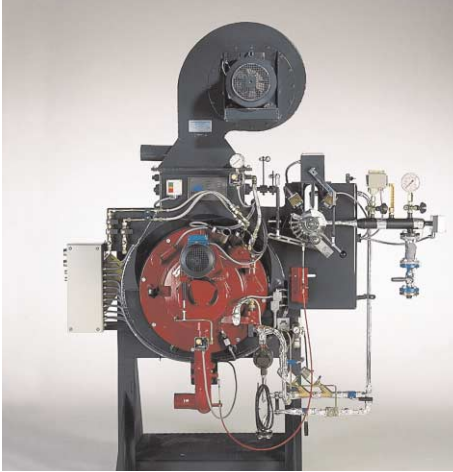
Pressure parts

The boiler pressure part is made of well-proven mild steel with elevated temperature properties. Several Finite Elements Analyses have made it possible to minimise the stress concentration in corners and around the pin-tube elements. This will prolong the life-time of the boiler.

Burner

A monobloc type pressure-jet burner is mounted on the boiler. Being hinge-mounted, the burner can swing out for service or easy access to the furnace. The burner housing is mounted on the boiler front, angled 15 degrees downward against the furnace bottom. This design allows for a long flame and gives better utilisation of the furnace, and the flow of the combustion particles becomes optimal. The result is high performance combustion even with the lowest grades of fuel. Optionally MISSION™ OS can be delivered with an Aalborg Industries rotary-cup burner.

Customer benefits



Aalborg Industries' KB 250 burner on 2.5 t/h boiler.

Some 250 hours saved with the standard modular concept on:

- engineering
- plant erection
- commissioning
- logistics
- trouble shooting
- scaffolding

Low transportation and installation costs

The boiler is preassembled and the number of forwarded items is reduced to 3-6 items altogether for a complete boiler unit.

MISSION™ OS is delivered with the burner and an additional 1-3 units. The boiler is ready for assembly and installation upon receipt. The control panel is mounted on the boiler side and assembling is facilitated by the use of pre-wiring and marked connections.



Feedwater pump and chemical dosing unit.

Low operational costs

- during the lifetime of the vessel through well-proven technology in an up-to-date and innovative concept.

Maximised performance and lifetime

- through thoroughly tested and optimised technical solutions.

Rapid service

- and repair with the standard design. Spare parts are in stock world-wide.

On-board maintenance reduced

The boiler requires only one daily inspection, occasional water washing and cleaning of the oil nozzle.

MISSION™ OS options:

Feedwater pump unit including water treatment, fuel oil heater unit, salinometer, sample cooler and heating coil.



Front page photos:

Cruise ship "RADIANCE OF THE SEAS" built at Meyer Werft in Germany.

Equipped with 1 off 5 t/h MISSION OS.

Vehicle carrier "PLATINUM RAY" built at Stocznia Gdynia in Poland. Equipped with 1 off 2.5 t/h MISSION OS with KB burner and 1 off AV7 economiser.



Aalborg Industries - partnership and reliability

More than 20,000 vessels all over the world use energy sources from Aalborg Industries' boilers. This makes Aalborg Industries the world's leading supplier of marine boilers. Aalborg Industries is dedicated to a life-long commitment to its customers. A lasting partnership creates long-term benefits for all parties involved. Consequently, state-of-the-art technology will always be available for shipyards and owners.



Aalborg Industries is an international group of companies within boiler and combustion technologies, and more than just another supplier. We are simply your most reliable choice of business partner now and in the future.

Visit our website:

www.aalborg-industries.com

Business centre:

Aalborg Industries A/S
P O Box 844, Gasvaerksvej 24
9100 Aalborg, Denmark
Tel. +45 99 30 40 00
+45 40 16 66 86 (24 hrs.)
Fax. +45 98 16 83 16
E-mail: aal@aalborg-industries.dk

Your contacts:

- **China:** Tel. +86 21 6886 3565
+86 411 270 9291
- **Finland:** Tel. +358 2 838 3100
- **Japan:** Tel. +81 78 271 5720
- **South Korea:** Tel. +82 51 703 6162
- **Sweden:** Tel. +46 8 580 243 00